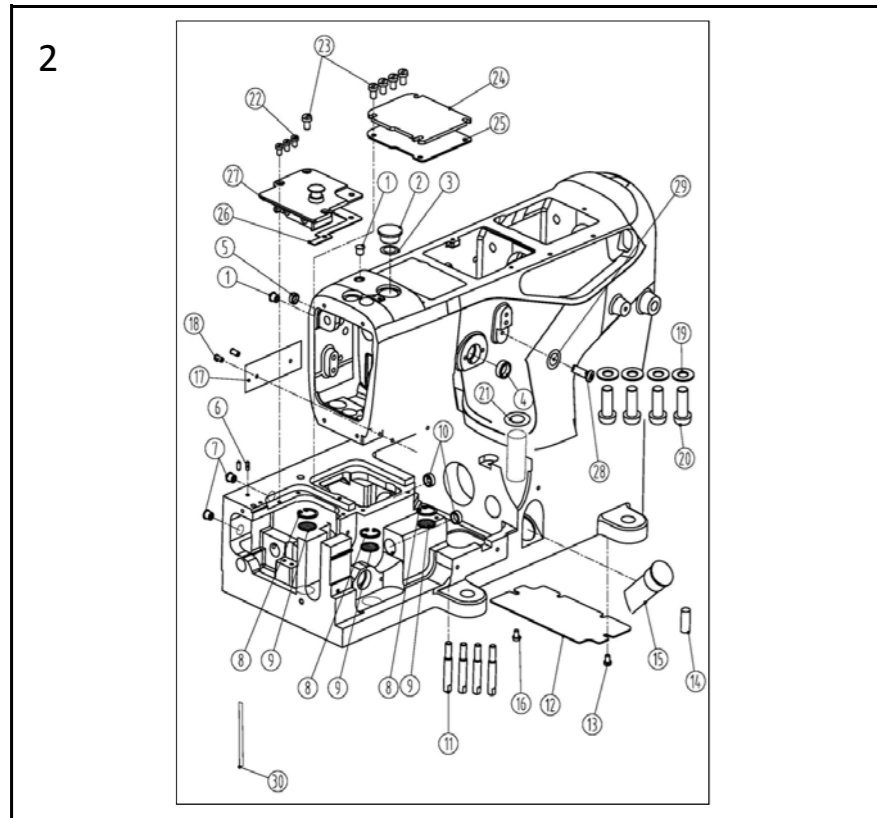
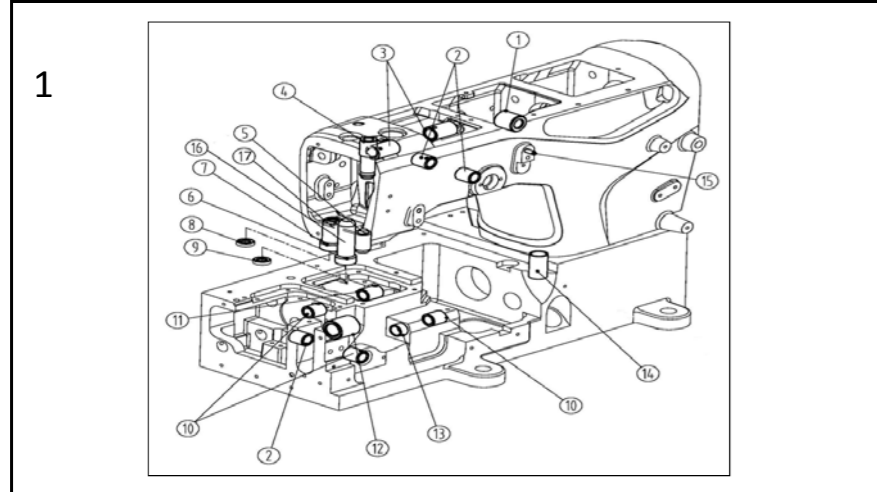


# JACK 杰克

快速服务 100%

## W4-D零件手册 W4-D Parts Manual

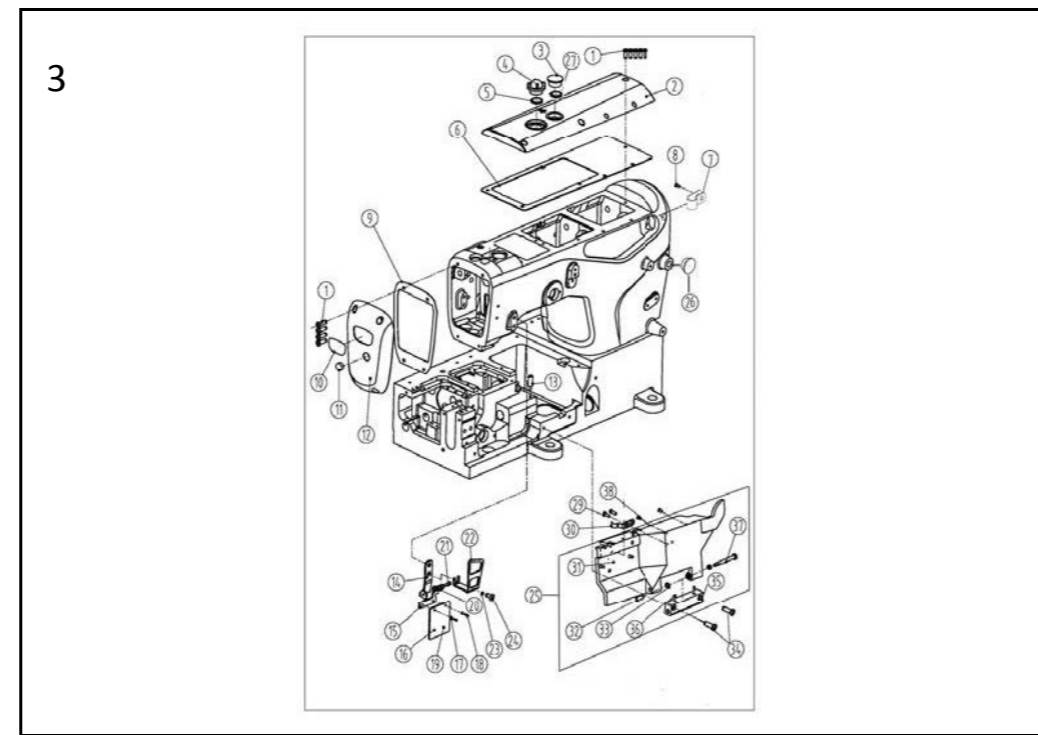


### 2、车架部件 (Frame assemblies)

序号Ref.No	公司件号 Part No	参考件号 Ref. Part. no	名称	Description	数量 Number
1	30122006		油封	plug	3
2	21022007	206590	油封	plug	1
3	21012018		油封垫	washer	1
4	20622019		油封	plug	2
5	30122008		油封	plug	1
6	P01001		销A5×13	pin	2
7	30122006	240052	油堵	plug	4
8	H01001	240001	挡圈	ring	3
9	30112001	255002	滤油网	filter	3
10	30122008	208173	油封	plug	2
11	301s30001	250117	机壳螺钉	shoulder pin	4
12	30112002	250049	盖板	cover	1
13	s01002	7017	螺钉M4×6.5	screw	1
14	10126021		拼装销	pin	2
15	30111001	206590	油标	oil level gauge	1
16	s01002	7017	螺钉M4×6.5	screw	1
17	30137001	250233	机罩牌	sticker	1
18	R03001	210679	铆钉 2.5×4	pin	2
19	W02003		垫圈 10	washer	4
20	S05001		螺钉 M10×27.5	screw	4
21	001001		O型圈 15×2.65	o ring	1
22	301s11024		滑块导座螺钉	screw	3
23	L02001	7084	螺钉 M4×8	screw	5
24	30101005	250003	下节右盖	top cover (right)	1
25	30122003	250004	下节右盖垫	gasket	1
26	30122002	250020	下节左盖垫	gasket	1
27	30101004	250069	下节左盖	top cover plate (left)	1
	(30101162) 23机				1
28	207s11007		GB/T65-1985螺钉 M4×		1
29	W01001		GB/T 97.1-2002 M4垫片		1
30	30123028		JK-8569-0435油棉		1

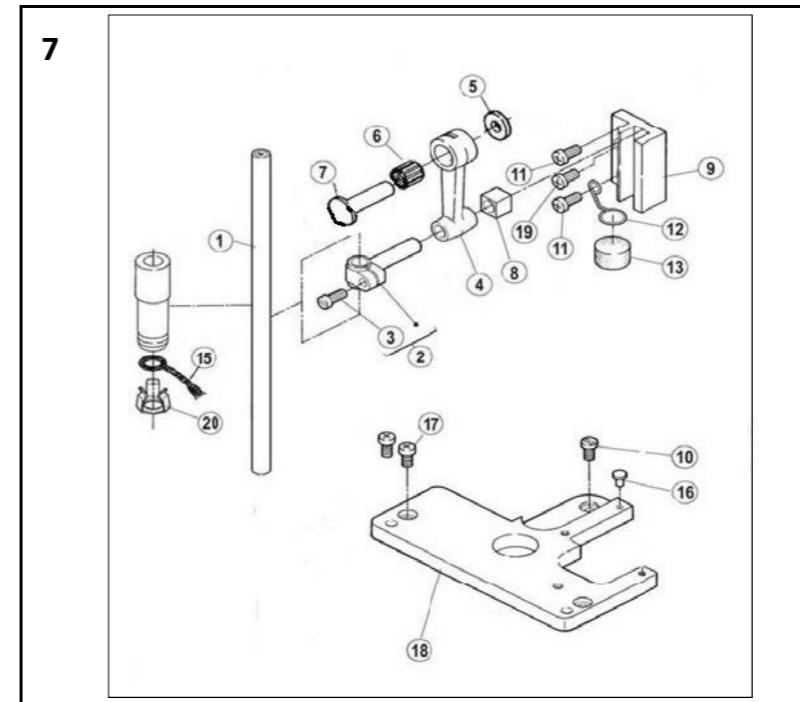
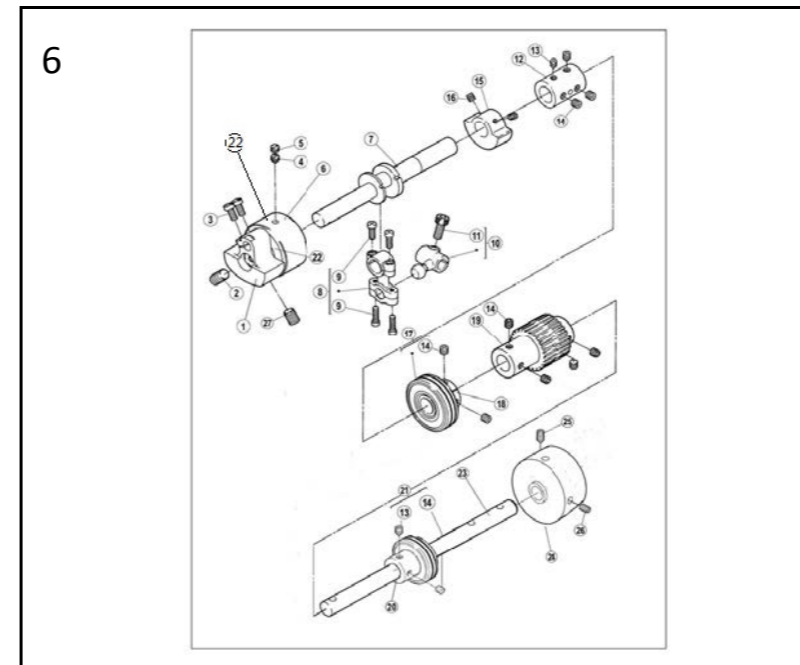
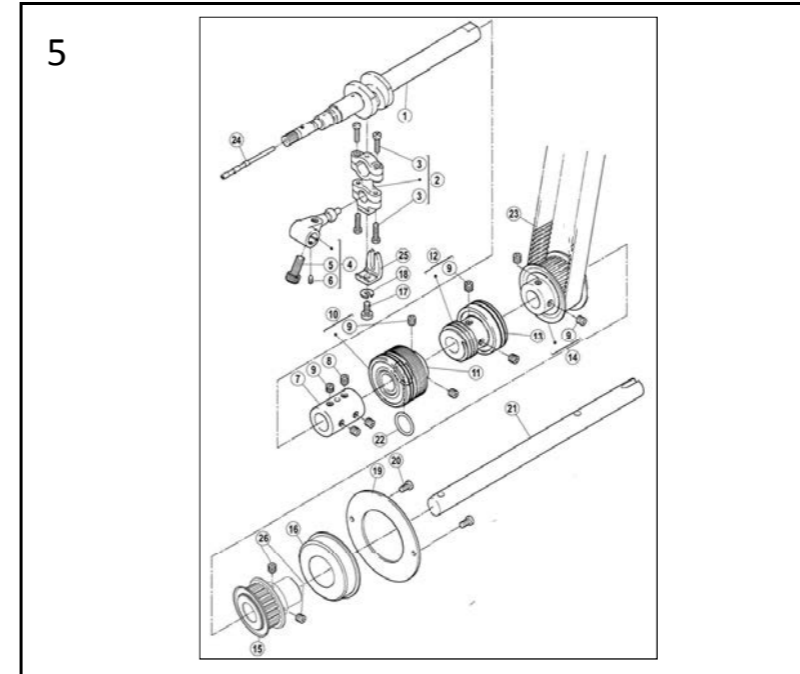
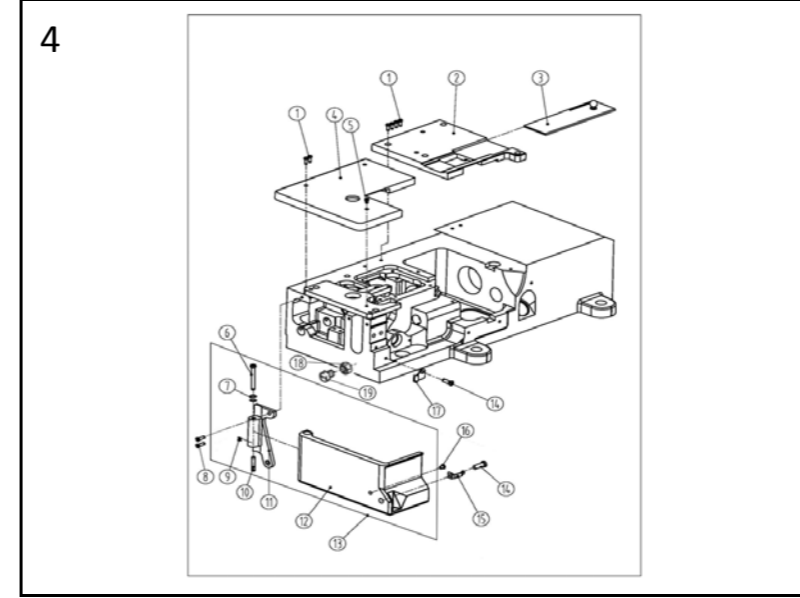
### 1、套筒部件(Bushing assemblies)

序号Ref.No	公司件号 Part No	参考件号 Ref. Part. no	名称	Description	数量 Number
1	31003002		胎压轴套筒	sleeve	1
2	30103021	210297	过线座轴套筒	sleeve	2
3	20103020	250141	送布轴套	sleeve	2
4	30103017	250146	针杆上套	sleeve	1
5	30103062	251003	针杆下套	sleeve	1
6	30103035	250147	压脚轴套筒	sleeve	1
7	30103038	250136	喂针摆动轴套筒	sleeve	1
8	20622019		油封	plug	1
9	30122039		油封	plug	1
10	20103014		前弯针轴后套筒	bushing	3
11	30103021	250135	弯针轴前后套筒	plug	1
12	30103010		主轴套筒	bushing	1
13	30103019		护针轴前套筒	bushing	1
14	(30221016)	255020	铜油管	pipe	1
15	P03005		销 4×8	pin	1
16	001006		O型圈8.5x1.8		1
17	001008		O型圈9x1.8		1



### 3、罩壳部件(Cover assemblies)序

号Ref.No	公司件号 Part No	参考件号 Ref. Part. no	名称	Description	数量 Number
1	s04060	7021	螺钉M4×10	screw	9
2	303600		上盖(喷漆)	arm cover(top)	1
3	21022007		油封	plug	1
4	20711055		油窗	Oil Sight Window	1
5	21022003		油窗垫	o ring	1
6	31022010		上盖密封垫	The head gasket	1
7	20711212		R型线夹8.6		1
8	S01002		螺钉 M4×6.5		1
9	31122001		机头左盖密封垫	o ring	1
10	13837002		商标牌	plug	1
11	10122003		油封	plug	1
12	303795		机头右盖(喷漆)	arm cover(rear)	1
13	301S30002	7089	左侧盖螺钉	screw	1
14	31012042		玻璃罩安装板	glass plate	1
15	31012029		护罩架	shield	1
16	30111003	250257	有机玻璃罩	eye guard	1
17	W01002	202875	垫圈	sticker	2
18	s01006	7009	螺钉M3×4.5	screw	2
19	20131063		护罩警示牌	sticker	1
20	W03001	210307	波形垫圈	washer	2
21	301S20001		螺钉	screw	1
22	31012012		过线护罩	thru takeup cover	1
23	W02004	303335	垫圈6	sticker	1
24	s01060	7052	护罩螺钉	screw	2
25	300951		前门板缝台	screw	1
26	31022015		油封		1
27	21012018		油封垫		1
29	s01002	7017	螺钉M4×6.5	screw	2
30	30127001	250051	前罩簧	flat spring	1
31	30101110		JK-8568A-W2-38前门板	arm cover	1
32	(301s20003)	250014	前罩缝台螺钉	pin	1
33	(30128002)	201191	弹簧垫圈	spring	3
34	s01007	7023	螺钉M4×13.5	screw	2
35	(30101063)		前罩缝台座	bracket	1
36	(s10006)	4539	螺钉M5×6	screw	2
37	(301s20002)	250013	前罩缝台座螺钉	screw	1
38	30122015		前罩防震垫	cushion	2



### 4、缝台部件(Cloth plate assemblies)

序号Ref.No	公司件号 Part No	参考件号 Ref. Part. no	名称	Description	数量 Number
1	207s11008	7021	螺钉 M4×12	screw	6
2	300137	250074-ASD	右缝台盖(喷漆)	bed cover(right)	1
3	30115001	250071-91	推板	cover	1
4	300953	250052-BSD	左缝台盖(喷漆)	bed cover(left)	1
5	s02001	7043	螺钉 M4×6	screw	1
6	(301s20004)		侧盖合扇螺钉	screw	1
7	(30128002)	201191	弹簧垫圈	spring	2
8	s01005	7020	螺钉 M4×10	screw	4
9	(s10001)		螺钉M3×4	screw	2
10	(301s20005)		销螺钉	pin	1
11	(30101112)		侧盖合扇	cover	1
12	(30101111)		侧盖	side cover	1
13	300952		侧盖组件(喷漆)	side coverassy	1
14	s01002	7017	螺钉M4×6.5	screw	2
15	31127001		前罩锁簧	flat spring	1
16	30122015		前罩防震垫	cushion	1
17	30112095		前罩锁簧舌	flat spring	1
18	S01005		螺钉 M4×10	screw	1
19	N01001		螺母M4		1

### 5、下轴部件(Hook shaft assemblies)

序号Ref.No	公司件号 Part No	参考件号 Ref. Part. no	名称	Description	数量 Number
1	400068	250501B-91	下轴	crankshaft assy	1
2	400060	2505009-92	连杆组件	connection assy	1
3	(201S20015)	7015	螺钉 M3.5×13	screw	4
4	30104002	252008	下轴曲柄	crank	1
5	S05002	4534	螺钉 M6×0.75×15.2	screw	1
6	S12002	4545	螺钉 M3×4	screw	1
7	30103004	250506	接轴套	joint	1
8	S12003	4555	螺钉 M6×7	screw	1
9	S10029	4547	螺钉 M6×0.75×5	screw	9
10	3012400300	250508-91	油封轴承	bearing	1
11	30103006	250508	中轴套	bushing	1
12	30103008	250543	轴杆	bushing	1
13	3012400400		油封轴承	bearing	1
14	3112500100	250511-1	下轴同步带轮	gear(lower)	1
15	30125005	250530	小同步带轮2	small gear2	1
16	B01003	250504-91	轴承 6304Z	bearing	1
17	301S11004	4019	比叉螺钉	screw	1
18	W02001	202286	M5 弹垫	washer	1
19	30108001	250514	轴承挡圈	cover	1
20	207s11007	7019	螺钉 M4×7.8	screw	2
21	31102001	250507	下后轴	shaft	1
22	001001	206837	O型圈 15×2.65	o ring	1
23	30135021	206050C	同步带	timing belt	1
24	30126001	250525	调节销	adjusting bar	1
25	30109001	201074	比叉	guide	1
26	s12005		螺母M4×4		2

### 6、上轴部件(Main shaft assemblies)

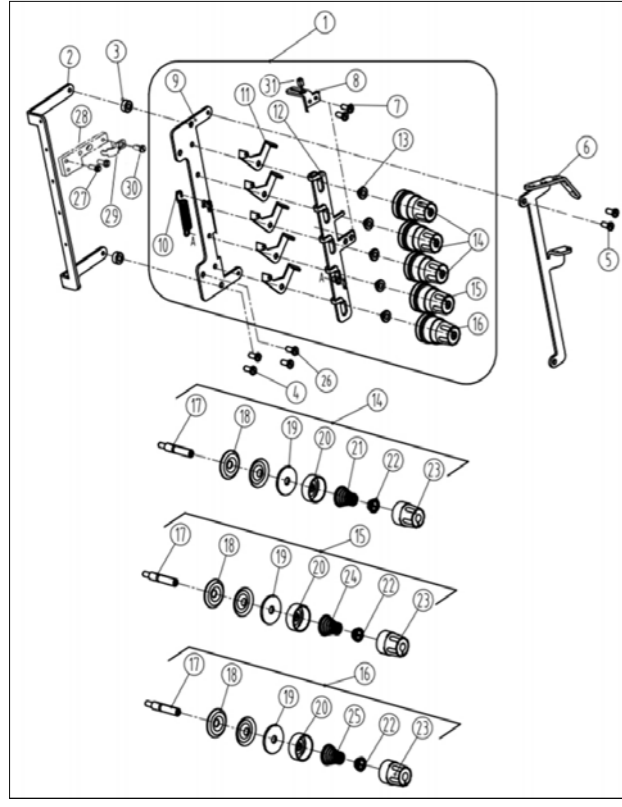
序号Ref.No	公司件号 Part No	参考件号 Ref. Part. no	名称	Description	数量 Number
1	31104002	250526B92	针杆曲柄	motion assy	1
2	S10004	4592	螺钉 M8×1×12	screw	1
3	S01011	7028	螺钉 M5×10	screw	2
4	S08001		螺钉 M6×0.75×3.5	screw	1
5	S11001	7152	螺钉 M6×0.75×6	screw	1
6	B01005		轴承	bushing	2
7	400065	250517A	上前轴	crankshaft	1
8	400061	253500-92	连杆组件	connection assy	1
9	(201S20015)	7021	销连杆螺柱	screw	4
10	30104006	253501A	弯针曲柄	crank assy	1
11	S05002	4534	螺钉 M6×0.75×15.2	screw	1
12	30103004	250506	接轴套	joint	1
13	S12003	4555	螺钉 M6×0.75×7	screw	3
14	S10029	4547	螺钉 M6×0.75×5	screw	9
15	30109003	250524	上轴平衡块	balance weight	1
16	S10002	4514	螺钉 M5×5	screw	2
17	3012400400	250529-91	油封轴承	bushing	1
18	30103107	250529	轴承套(短)(粉末冶金)	bushing	1
19	30125002	250521	上轴同步带轮	gear(upper)	1
20	30103108	250528	轴承套(长)(粉末冶金)	bushing	1
21	3012400400	250529-91	油封轴承	bearing	1
22	30103015		轴承套	bushing	1
23	30202004		后轴	shaft	1
24	31035002		手轮	pulley	1
25	S12001	4556	尖端固定螺钉 M6×8	screw	1
26	S10009	4541	螺钉 M6×8	screw	1
27	301S10004		针杆曲柄螺钉		1

### 7、针杆部件(Needle bar assemblies)

序号Ref.No	公司件号 Part No	参考件号 Ref. Part. no	名称	Description	数量 Number
1	30102008	251000-91	针杆	needle bar	1
2	30102009	206061	针杆轧头	needle bar pin	1
3	301S11005	5325	针杆轧头螺钉	screw	1
4	30105005	206052	针杆连杆	link/needle bar drive	1
5	30128006		轴套	washer	1
6	B07001	240098	轴承 8×12×12	needle bearing	1
7	30102010	251010A	连杆轴	eccentric pin	1
8	30109004	206063	针杆滑块	block	1
9	30109005	206062	滑块导座	guide block/needle	1
10	(s01002)	7082	螺钉 M4×6.5	screw	1
11	207s11008	7021	螺钉 M4×12	screw	2
12	30127003	251009	毛毡弹簧	spring	1
13	30123002	179040-05	毛毡	felt	1
15	30123014	202176	油线	oil wick	1
16	30122018	240123	防震垫	cushion rubber	1
17	207s11007	7019	螺钉 M4×7.8	screw	2
18	30109006	251007	针板座	bracket	1
19	207s11007	7019	螺钉 M4×7.8	screw	1
20	30112009	206524	油线托	oil wick retainer	1



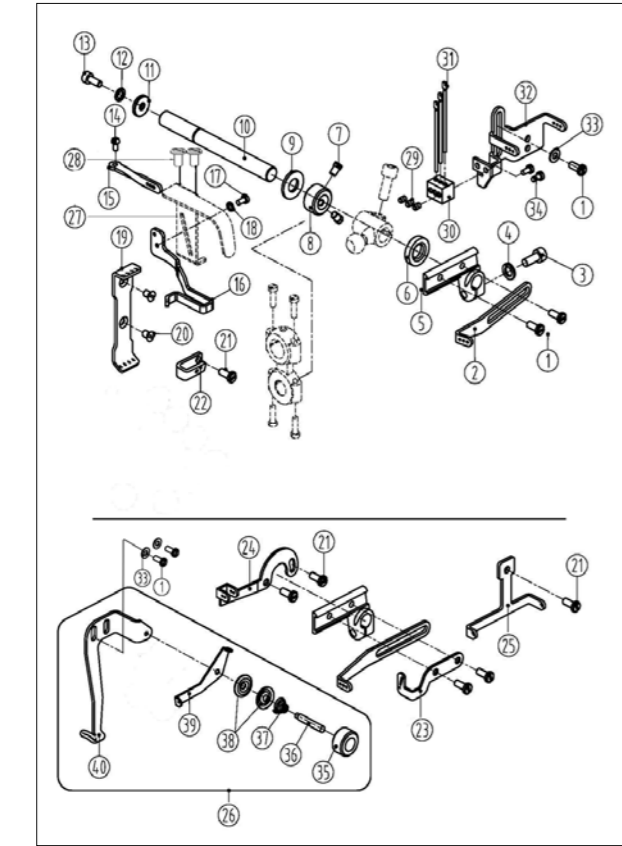
14



## 14、松线部件(Thred loosening assemblies)

序号Ref.No	公司件号 Part No	参考件号 Ref. Part. no	名称	Description	数量 Number
1	3101300800	201068	夹线器	tension	1
2	31013014		松线架	Loose thread stand	1
3	31009004		松线垫块	block	2
4	207s11007		螺钉M4×7.8	screw	2
5	S04010		螺钉M4×5.5	screw	2
6	310130022		夹线器过线	Loose line board	1
7	S04010		螺钉M4×5.5	screw	2
8	31012048		松线拉板	Loose line board	1
9	31013007		过线架	Loose line board	1
10	30127010		调节弹簧	reset spring	1
11	30113007		二孔过线板	thread guide	5
12	31013022		松线板	Loose line board	1
13	30103041	206202	调停套	spacer	5
14	3011300400	254010APU	调线组件(弱)	tension spring assembly	3
15	3011300500	254010BPV	调线组件(中)	tension spring assembly	1
16	3011300600	254010CPV	调线组件(强)	tension spring assembly	1
17	301S30010	001817-2A	夹线柱	screw stud	1
18	30128016	210319	夹线片	tension disc	2
19	30123027		松线夹线片垫	felt	1
20	30111005	208450-UA	调压止动盖	cup	1
21	30127011	301037	调压簧(强)	spring(heavy)	3
22	30111006	208448	调压止动套	ratchet	1
23	301S16006	208447-UA	调压螺母	nut	1
24	30127012	201086	调压簧(中)	spring(medium)	1
25	30127013	201068	调压簧(弱)	spring(light)	1
26	207s11007		螺钉 M4×7.8	screw	2
27	207s11007		螺钉 M4×7.8	screw	2
28	31012044		钢丝支撑板	Plate	1
29	31012025		钢丝绳压板	Plate	1
30	207s11007		螺钉 M4×7.8	screw	1
31	(3102200200)		松线钢丝软轴	Wire rope	1

15



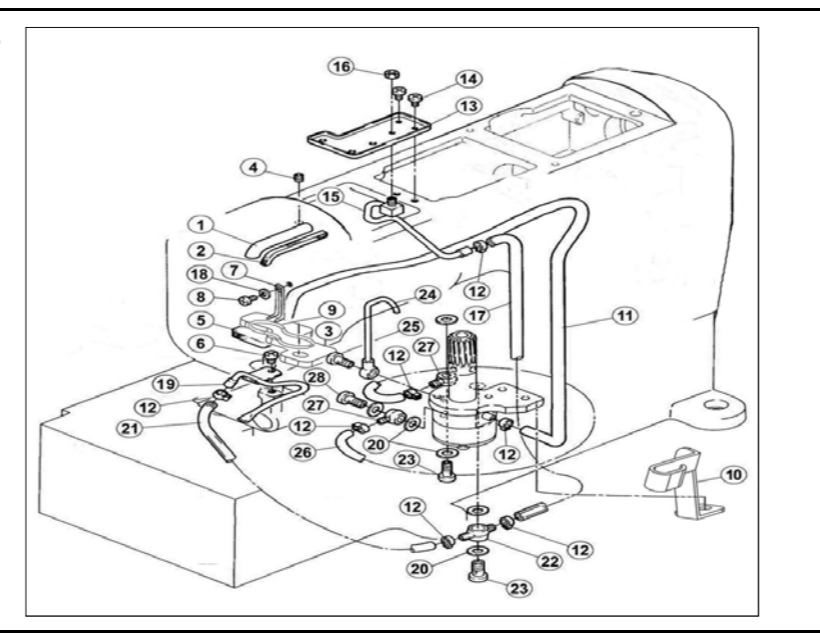
## 15、过线部件(Thred loosening assemblies)

序号 Ref.No	公司件号 Part No	参考件号 Ref. Part. no	名称	Description	数量 Number
1	S01001	7019	螺钉M4×7	screw	6
2	31013006	253505A	长过线板	thread take-up	1
3	S05004	4501	螺钉M5×14	screw	1
4	W02001	303067	垫圈	washer	1
5	30101018	253504	过线轴	lever	1
6	20622019 (车壳部件已挂)		油封	plug	1
7	301S12001	5084	前轴螺钉	screw	2
8	30108008	240201	过线轴轴挡圈	ring	1
9	30128008		撑架轴垫圈	washer	1
10	31002001	253503	过线形轴(中轴)	shaft	1
11	30128019	204107	垫片	washer	1
12	W02002	201252	M4垫圈	washer	1
13	S05048	4527	螺钉M4×10	screw	1
14	311s05001	7009	螺钉M3×6	screw	1
15	31013017	253507	三孔过线	thread guide	1
16	31112009		护线罩	thread support	1
17	S01006		螺钉	screw	1
18	30128034		垫圈	washer	1
19	31013005		过线板	thread guide	1
20	206S30016	7170	螺钉	screw	2
21	207s11007	7018	螺钉M4×7.8	screw	3
22	31012045		U型夹线座	thread tension bracket	1
23	31012018		过线板	thread guide	1
24	30112029	253514	喂针过线	thread guide	1
25	31013011	253515	过线板	thread guide	1
26	3111200800		喂针过线组件	thread guide	1
27	31112010		针杆护罩	thread guide	1
28	S04010		针杆护罩螺钉	screw	2
29	S10001	4535	螺钉M3×4	screw	3
30	30113012	253545	针杆过线座	holder	1
31	30113013	234521	过线针	thread guide	3
32	30112027	253544	硅油盒固定架	thread guide	1
33	W01001	303448	M4垫圈	washer	3
34	S01006	7009	螺钉M3×4.5	screw	2
35	(302S16005)		调压螺母	adjusting nut	1
36	(301S30055)		调压螺钉	adjusting screw	1
37	30127016	137109	夹线簧	spring	1
38	20112033	137108	夹线片	thread retainer	2
39	30112032	253547	喂针二眼过线	thread guide	1
40	31112008	253548	喂针过线板	thread guide	1

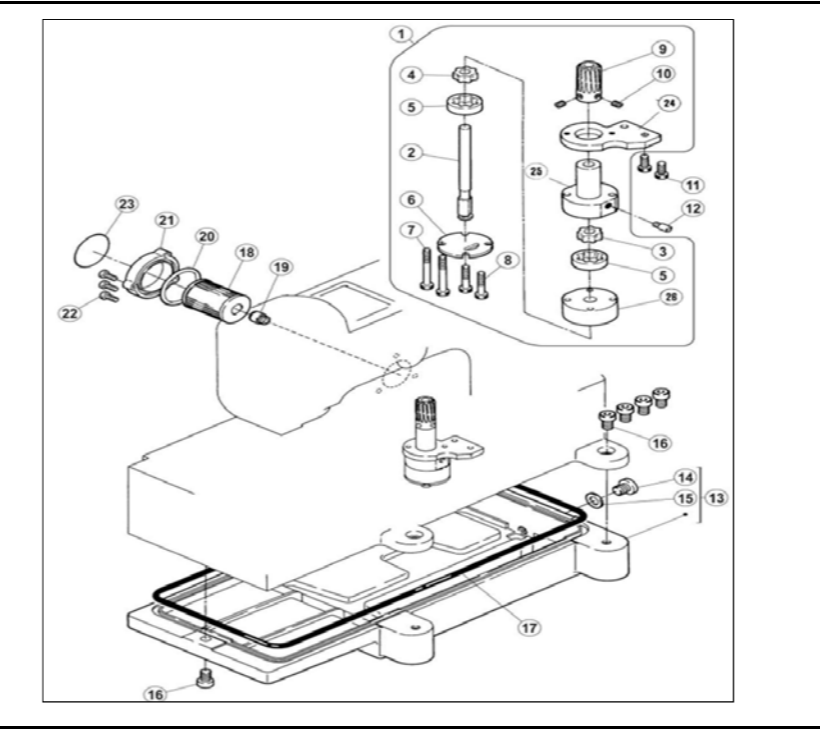
## 16、打线凸轮外移部件(Outside cam assemblies)

序号Ref.No	公司件号 Part No	参考件号 Ref. Part. no	名称	Description	数量 Number
1	30102063		打线凸轮轴	shaft	1
2	W03004		挡圈12	ring	1
3	B04017		轴承6001Z	bracket	1
4	H01011		利用弹性挡圈	ring	1
5	30125004		小同步步带轮1	small gear1	1
6	30122100		油封	plug	1
7	S10029		螺钉 M6×0.75×5	screw	1
8	S12003		螺钉 M6×0.75×5	screw	1
9	30135005		小同步步带	small timing belt	1
10	S10007		螺钉 M5×5	screw	2
11	3010306300		打线凸轮组件	thread takeup	1
12	s10002		螺钉 M5×5	screw	2
13	H01016		挡圈21	ring	1
14	30103033		挡圈套	oil baffle set	1
15	30112231		打线架	bracket	1
16	B06004		轴承 6801RS	bracket	1
17	30108011		挡圈	washer	1
18	30113045		过线	thread guide	1
19	S01001		螺钉 M4×7	screw	1
20	30113047		过线	thread guide	1

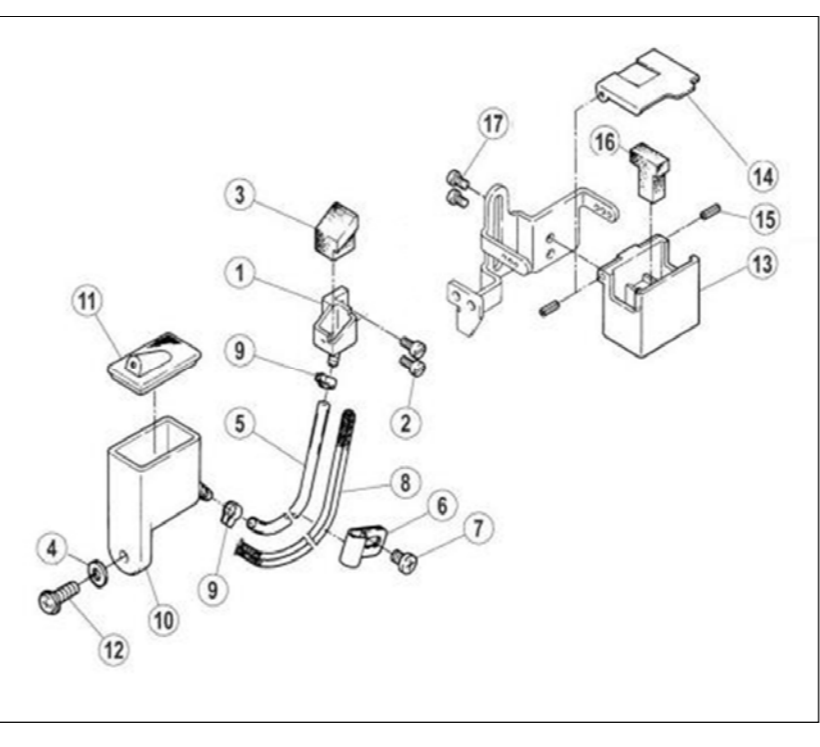
17



18



19



20	30213045		过线	thread guide	1
21	301S30055		调压螺钉	screw	1
22	10128001		毛毡垫	felt	1
23	12928036		小夹线垫片	thread guide disc	2
24	12927012		小夹线弹簧	pretension spring	1
25	302s16005		夹线螺母	tension nut	1
26	L02001		螺钉 M4×8	screw	1
27	30112230		打线座	bracket	1
28	30127062		卡簧片	clamp	1
29	S04021		螺钉	screw	2
30	207S11020		螺钉 M3×4	screw	3
31	30112233		打线片	thread guide	1
32	30313019		过线片(左)	thread guide (left)	1
33	30313020		过线片(右)	thread guide (right)	1
34	W03007		垫圈	washer	1
35	301S20020		螺钉	screw	1
36	20128031		挡圈	ring	1

## 17、润滑部件(Lubrication assemblies)

序号Ref.No	公司件号 Part No	参考件号 Ref. Part. no	名称	Description	数量 Number
1	30121012	255003	铜油管	oil pipe	1
2	30123010	240136	油毡	felt	1
3	30223023		针杆回油毡	felt	1
4	S10002	4514	螺钉 M5×5	screw	1
5	30223023	255021	油毡	felt	1
6	301S11024		滑块导座螺钉	screw	1
7	30127045	200136	回油毡卡簧	clamp	1
8	207s11007	255005	螺钉 M4×7.8	screw	1
9	30127060		毛毡卡簧	felt clamp	1
10	30112186		油管固定架	supporting structure	1
11	12921002	240135	维尼龙油管	tube	1
12	20429001	202199	油管卡簧	clamp	6
13	30112039	255006	接油盘	oil guard	1
14	S01002	7017	螺钉 M4×6.5	screw	2
15	3012101500	255007-91	喷油罩	oil distributor	1
16	N01001	4821	螺母 M4	nut	1
17	30121022	240134	Φ4×Φ6油管	tube	1
18	W01001	303448	垫圈 4	ring	1
19	30121009	255010-91	喷油管	oil distributor	1
20	20122033		垫片	washer	6
21	30121022	240134	Φ4×Φ6油管	tube	1
22	30136005	200136	油管接头	joint	1
23	301S30013	200152	过油螺钉	joint screw	2
24	30136003	255035-91	铜油管接头	pipe	1
25	301S30012	255037	油管螺钉	screw	1
26	30121022	240134	Φ4×Φ6油管	tube	1
27	30136005	200136	油管接头	joint	1
28	201S30004	200152	过油螺钉	joint screw	1
29	30129007		油管卡簧	clamp	1
30	20136007		油管接头塑料	joint screw	2

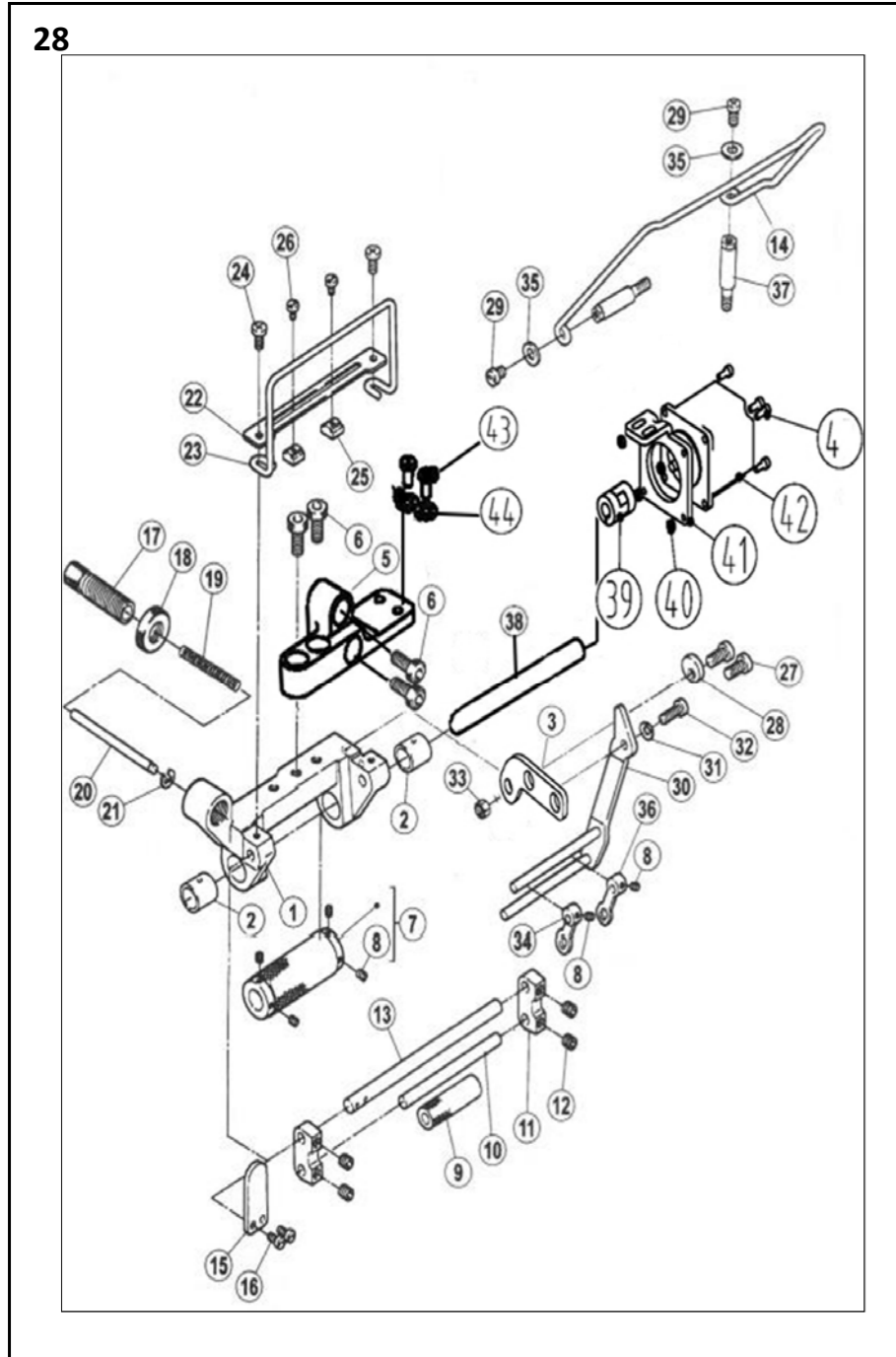
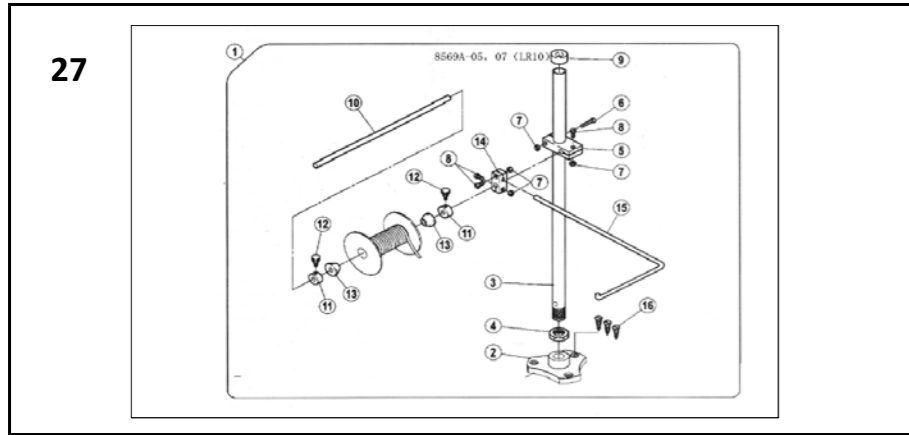
## 18、油泵部件(Oil pump assemblies)

序号Ref.No	公司件号 Part No	参考件号 Ref. Part. no	名称	Description	数量 Number
1	3012000100	255040-91	油泵组件	oil pump assy	1
2	(3012031)	255024	油泵轴	shaft	1
3	(30120004)	255025	主动轮2	rotor	1
4	(30120007)	255026	主动轮1	rotor	1
5	(30120005)	255027	从动轮	rotor	2
6	(30120008)	255028	油泵盖	cover	1
7	(301S20011)	7105	油泵螺钉	screw	2
8	(S05006)	7026	螺钉 M4×25	screw	2
9	(30125003)	255019	油泵蜗轮	worm wheel	1
10	(S10002)	4514	螺钉 M5×5	screw	2
11	207s13009	4501	螺钉 M5×14	screw	2
12	301S30014		过油螺钉	joint screw	1
13	30101023	255000	油盘	oil reservoir	1
14	30111015	51388	堵油螺钉	screw	1
15	20528014	202287A	垫圈	washer	1
16	S05007	4504	螺钉 M8×20	screw	5
17	30122025	255001	油盘密封圈	o ring	1
18	20736004	206233	过滤器	filter element	1
19	201S30030	210200	过滤器接头	bracket/filter	1
20	001010	206431	O型圈 38.7×3.55	o ring	1
21	300140	210201-SD	过滤器盖	cover	1
22	207s11008	7021	螺钉 M4×12	screw	3
23	(30131004)	9A3002	提示说明	filter seal	1
24	(30120002)		油泵固定板	fixed plank	1

## 19、硅油盒装置部件(Silicon oil delice assemblies)

序号Ref.No	公司件号 Part No	参考件号 Ref. Part. no	名称	Description	数量 Number
1	30101027	255013	机针冷却器	needle cooler (lower)	1
2	S01027	7010	螺钉 M3×6	screw	2
3	30123012	255014	油棉	felt	1
4	W01001	303448	垫圈 4	washer	1
5	30121021	240117	Φ5×Φ7油管	tube	1
6	30127020	206115	油管压簧片	bracket	1
7	S01002	7019	螺钉 M4×6.5	screw	1
8	20123021	202175	油线	oil wick	1
9	20429001	202199	油管卡簧(小)	clamp	2
10	30101026	255015	下硅油盒	silicone oil	1
11	30122026	255016	下硅油盒盖	cap	1
12	S01005	7020	螺钉 M4×10	screw	1
13	30111070	207066-UD	上硅油盒(塑料)	silicone oil	1
14	30112040	207067-UD	硅油盒盖	cap	1
15	P03008	206781	销 2×6	pin	2
16	30123011	207068	硅油棉	felt	1
17	S16002	7009	螺钉 M3×4.5	screw	2



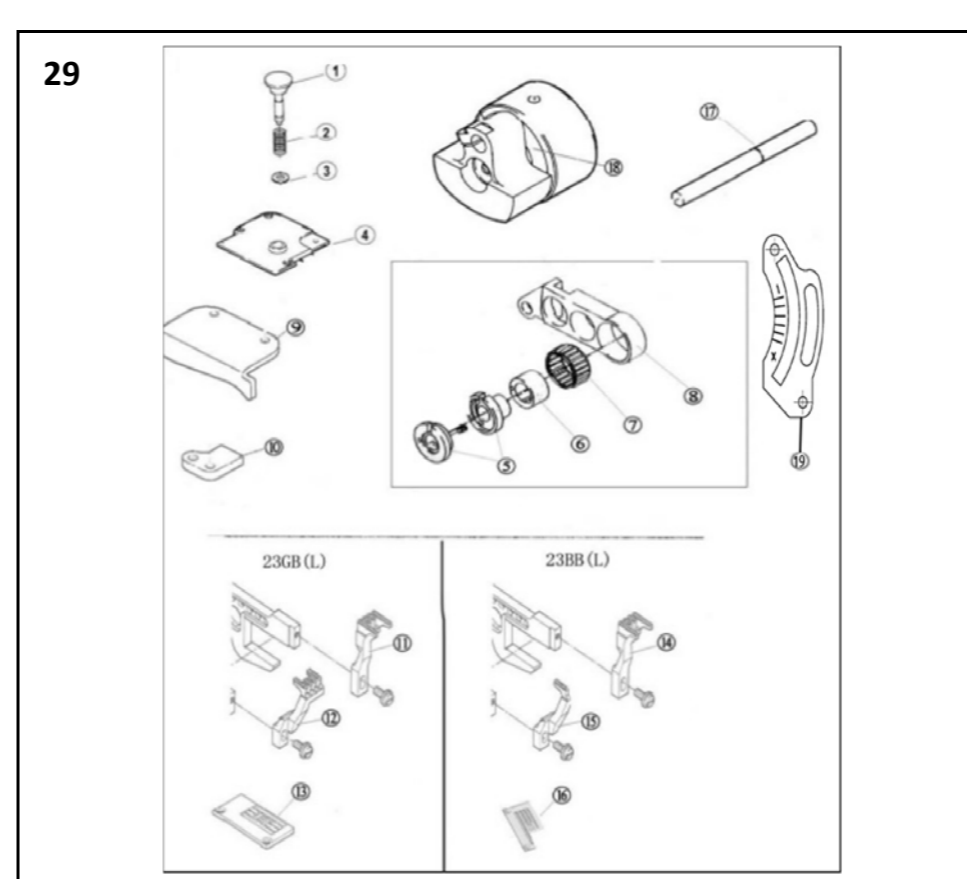


27、05、07专用部件 (05、07 specific parts)

序号Ref.No	公司件号 Part No	参考件号 Ref. Part. no	名称	Description	数量 Number
1	3010204100	306469A9S	带子组件	reel stand assy	1
2	30103047	306468-SA	支柱盘	bracket	1
3	30102042	306466-SA	支柱	rod	1
4	N02001		螺母SM3/4×16	nut	1
5	30111008	383-SA	棒架	bracket	1
6	S04003		螺钉 M4×25	screw	1
7	N01005		螺母 M4	nut	4
8	S04004		螺钉 M4×15	screw	3
9	30122027	386	棒帽	rod cap	1
10	30102043	306464	带架直棒	shaft	1
11	30103048	306463	轴古	collar	2
12	S01068		螺钉 M4×8	screw	2
13	30103064	306462	轴锥架	reel guide	2
14	30111009	233-SA	固定器	bracket	1
15	30113020	306467	带架棒	rod	1
16	301S30022	4913	木螺钉	screw	3

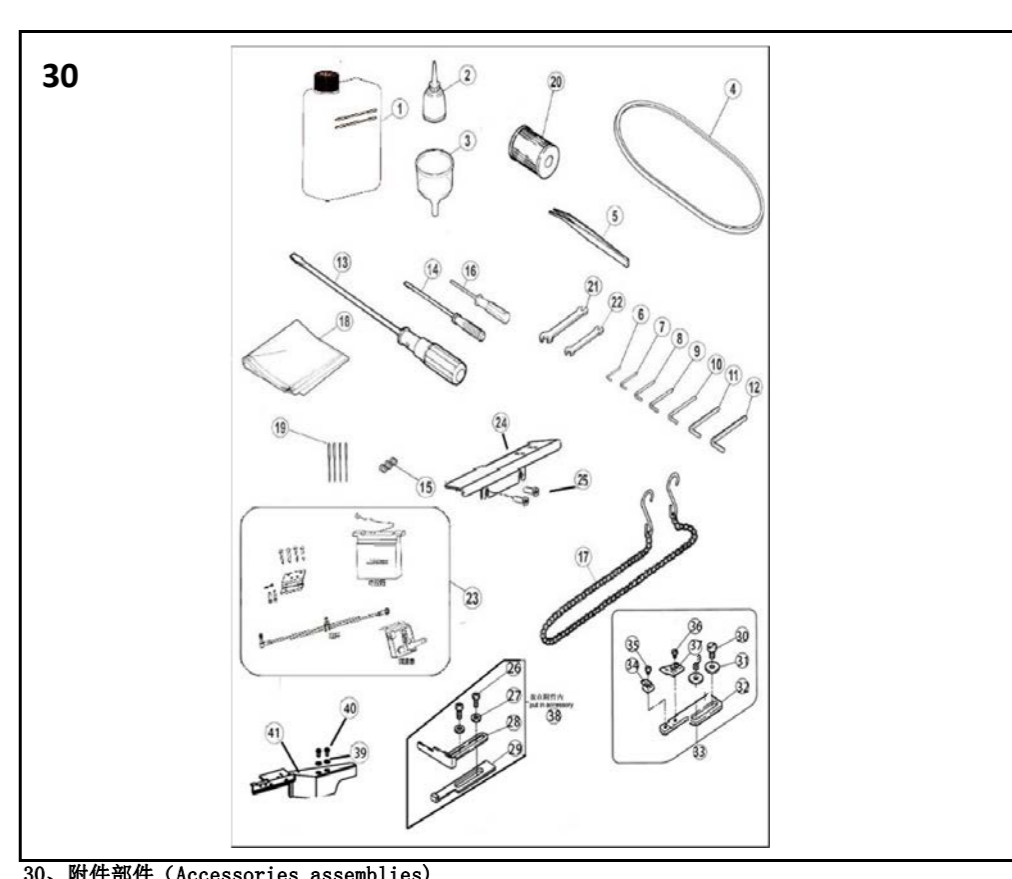
28、05专用部件 (05specific parts)

序号Ref.No	公司件号 Part No	参考件号 Ref. Part. no	名称	Description	数量 Number
1	300144		压带架座	bracket assy	1
2	30103055		套筒	bushing	2
3	31112017		W4-3004夹带连接板	bracket	1
4	S01005		螺钉M4X10		4
5	304427		压带架支座(喷漆)	bracket	1
6	S05019		螺钉 M6×16.3	screw	4
7	3010305700		压带轮组件	roller assy	1
8	S10005		螺钉 M3×3	screw	6
9	30103059		压带轮 II	rooler	1
10	30102045		夹带短轴	shaft	1
11	30109018	255502	夹带轴架	bracket	2
12	S10002	240102	螺钉 M5×5	screw	4
13	30102046		夹带长轴	shaft	1
14	30113021		带子架	lace guide	1
15	30112059		手柄	lever	1
16	S01027		螺钉 M3×5	screw	2
17	301S30027		调节螺钉	screw	1
18	301S16011	255503	调节螺母	nut	1
19	30127024		弹簧	spring	1
20	30126013	255504	销轴	shaft	1
21	H05002	7009	挡圈5	ring	1
22	30112055		压带板	guide	1
23	30113022	255505	压带架	lace guide	1
24	S01002		螺钉 M4×6.5	screw	2
25	301S16010		位置挡块	guide	2
26	301S11018		螺钉	screw	2
27	207s11007		螺钉 M4×7.8	screw	2
28	30128028		偏心垫	stopper	1
29	207s11007	255508-2	螺钉 M4×7.8	screw	2
30	3011205600		夹带架组件	bracket assy	1
31	30128020	306105	垫片	spring	1
32	S05048	192024	螺钉 M4×10	screw	1
33	N01001	W00024-1	螺母 M4	nut	1
34	30105017	202522	夹带连杆 I	lace guide	1
35	W01004	207045	垫圈5	washer	2
36	30105018	255507-91	夹带连杆 II	lace guide	1
37	301S30025	4547	台螺钉	screw	2
38	31102003		W4-3001滚轮轴		1
39	31103002		W4-3010弹性联轴器		1
40	N01001		螺母 M4		4
41	31112016		W4-3003电机安装座		1
42	3113300300		W4-3012细缝步进电机		1
43	S01011		GB/T65-1985螺钉 M5×10		2
44	W01009		GB/T97.1-1985垫圈5		2



29、23专用部件 (23 specific parts)

序号 Ref.No	公司件号 Part No	参考件号 Ref. Part. no	名称	Description	数量 Number	
1	30126016		针距调节按钮	pin	1	
2	30127026		针距调节簧	spring	1	
3	12928008		平垫圈	washer	1	
4	30101162		下节左盖	cover	1	
5	3010308900		调节器套组(大针距)	eccentric retainer	1	
6	30103150		送布调节器	regulator	1	
7	30103100		偏心轴承套(大针距)	eccentric	1	
8	30104060		差动送布架(大针距)	Link/main feed	1	
9	30109025		左挡板	guide (left)	1	
10	30109026		挡板	guide (lower)	1	
11	30114028		送布牙 (356/364)	main feed dog	1	
12	30114029		差动牙 (356/364)	differential feed dog	1	
13	30115041		23GB针板 (356)	needle plate	1	
14	30115042		23GB针板 (364)	needle plate	1	
15	30114030		送布牙 (356/364)	main feed dog	1	
16	30114031		差动牙 (356/364)	differential feed dog	1	
17	30115045		2302BB针板 (356)	needle plate	1	
18	30115046		2302BB针板 (364)	needle plate	1	
19	30102051		摆轴	shaft	1	
20	400308		针杆曲柄	motion assy	1	
21	30112220		调节杆		1	
22						
23						
24						
25						
26						
27						
28						
29						
30						
31						
32						
33						
34						
35	S01036		螺钉 M3×3	screw	1	
36	S01036		螺钉 M3×3	screw	1	
37	30109021		盖缝附件3	fabric guide	1	
38			08附件		1	
39	W01009		垫圈5		2	
40	S01011		螺钉M5×10		2	
41	304252		W4-0301前罩缝台盖		1	



30、附件部件 (Accessories assemblies)

序号Ref.No	公司件号 Part No	参考件号 Ref. Part. no	名称	Description	数量 Number
1	20131037		油壶(大)	oil container	1
2	20131038		小油壶(尖嘴)	oiler	1
3	20131039		漏斗	oil funnel	1
4	30135004		皮带(非直驱专)	leather belt	1
5	20131051		镊子	tweezers	1
6	30131007		内六角扳手	allen key driver/1.5mm	1
7	20131046		内六角扳手	allen key driver/2mm	1
8	30131010		内六角扳手	allen key driver/2.5mm	1
9	30131012		内六角扳手	allen key driver/3mm	1
10	20131047		内六角扳手	allen key driver/4mm	1
11	20131056		内六角扳手	allen key driver/5mm	1
12	30131026		内六角扳手	allen key driver/6mm	1
13	20731047		螺丝刀(大)	screwdriver (large)	1
14	10131004		螺丝刀(小)	screwdriver (small)	1
15	S10005		螺钉 M3×3	screw	3
16	20131044		内六角扳手	allen key driver/1.5mm	1
17	30131018		链条(非直驱)	chain	1
18	10131005		机头罩	dust cover	1
19	30117001		机针	needle	4
20	20136001		滤油器	filter element	1
21	30131005		扳手(7mm-)	wrench/ (7mm-9mm)	1
22	30131006		扳手(8mm-)	wrench/ (8mm-10mm)	1
23	3013001100		直驱控制器(直)	DI Special Part	1
24	304120		加宽前门板组件		1
25	S01011		螺钉M5×10		2
26	301S11024		滑块导座螺钉	screw	2
27	W01001		垫圈4	washer	2
28	30112065		缝料挡板1	fabric guide	1
29	30112066		缝料挡板2	fabric guide	1
30	S01011		螺钉 M5×10	screw	2
31	W01009		垫圈5	washer	2
32	30112035		盖缝附件2	bracket	1
33			03附件		1
34	30109020		盖缝附件1	fabric guide	1

工业缝纫机安全使用注意事项:

1. 必须遵守基本措施;
2. 必须经过专业培训, 对缝纫机设备性能;
3. 使用前应检查所有安全装置;
4. 在安装机针、更换机针、压脚、针板、送布牙、弯针、旋梭或修理时, 应立即关闭电源;
5. 离开缝纫机或工作场所时应关闭电源;
6. 使用离合马达时, 要等待马达完全停止后再进行;
7. 缝纫机及附属装置使用的机油, 润滑油等液体流入眼睛或沾到皮肤上应立即清洗;
8. 禁止用手触摸缝纫机通电时的零件或装置;
9. 有关工业用平缝机与包缝机的修理、改造、主要机构的调整由专门技术人员来进行;
10. 一般的维修保养由专人进行;
11. 在电气方面的修理应在电气技术员的监督和指导下进行;
12. 缝纫机使用期间应定期清扫;
13. 为了正常安全运转, 应安装地线, 同时应在不受高频焊机接机等强噪声源影响的环境下使用;
14. 电源插头应由专人安装;
15. 工业用平缝机、包缝机在指定用途以外不能使用。

环保要求:

1. 使用过程中产生的废油及其他废弃物应根据当地环保的要求进行合理的处置。
2. 请在使用完后及时关闭电源, 减少电能的消耗。
3. 请在说明书要求的电压及环境下使用, 已延长产品的使用寿命, 减少废弃物的产生。
4. 机器报废后请勿将本机器及其附件作为普通的生活垃圾处理。请遵守本设备及其附件处理的本地法令, 并支持回收行动。

Notes for safe use of industrial sewing machines:

1. Basic measures must be observed.
2. Pass the specialized training and master sewing machine equipment performance.
3. All safety devices should be checked before use.
4. When installing needle, and changing needle, presser foot, plate, feed dog, bent needle, hook or repairing, the power supply should be turned off immediately.
5. Power should be turned off when leaving the sewing machine or workplace.
6. When using the clutch motor, please wait until the motor stops completely.
7. The machine oil and other liquids used in sewing machines and ancillary devices should be cleaned immediately when they are put into eyes or touch skin.

8. Do not touch the parts or devices when the machine is powered by hand.
9. The repair, renovation and adjustment of the main mechanisms of the relevant industrial sewing machines and overseers shall be carried out by specialized technicians.
10. General maintenance is carried out by specially-assigned persons.
11. Electrical repairs should be performed under the supervision and direction of the electrical technician.
12. The machine should be cleaned regularly during operation.
13. In order to operate normally and safely, ground lines should be installed, and they should be used in an environment free from strong noise sources such as high frequency welding machine.
14. Power plug should be installed by specially-assigned person.
15. Industrial lockstitch sewing machine and overlock sewing machine can not be used except the designated use.

Environmental requirements:

1. Please dispose the waste oil and other waste products properly according to local environmental protection requirements.
2. Please turn off the power after use to reduce power consumption.
3. Please use under the voltage and environment required in the manual to extend the service life of the product and reduce waste generation.
4. Do not treat the machine and its accessories as ordinary household garbage after being scrapped. Please comply with local laws governing the disposal of the equipment and its accessories and support recycling operations.



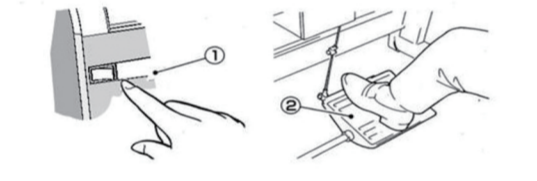
**绷缝机 Interlock Sewing Machine**  
W4系列 W4 Series  
**产品使用说明书 Product Users' Manual**  
杰克缝纫机 JACK SEWING MACHINE  
HTTP://WWW.CHINAJACK.COM  
杰克缝纫机股份有限公司 JACK SEWING MACHINE CO.,LTD.  
公司地址 (Address of Company): 中国浙江省杭州市 13 号 15 号 15 号 15 号 15 号 15 号 15 号 15 号 15 号 15 号 15 号  
电话 (Tel): 0086-0516-8017730 8017739  
传真 (Fax): 0086-0516-8017738  
邮编 (Zip Code): 311000  
销售科电话 (Sales Dept. Tel): 0086-0516-8017730  
售后服务部电话 (After Sales Service Dept. Tel): 400-807658  
http://www.chinajack.com  
2019年1月版

**安全须知**  
对于缝制机本身各种装置,我们充分考虑到它的安全性。请遵照基本的操作方法,安全的进行工作。  
●拆除为保证安全所设置的装置,零件的情况下使用,是非常危险的。请绝对不要拆除后使用。  
●缝制机在使用时,请不要在缝制机台板上放置工具及缝制时不必要的物品。  
●在对缝制机进行检查、修理、清扫等维护作业时,请关掉电源开关,将电源线插销从插座上拔下,并确认踩缝制机踏板也不会转动之后,再进行操作。

**OBSEVE THESE SAFETY PRECAUTIONS**  
Though We takes the utmost care to produce safe sewing machines and devices, operators should follow these basic safety rules.  
●To prevent accidents , do not remove safety devices or parts while operating the machine.  
●Do not leave tools or other unnecessary objects on the machine table while operating the machine.  
●Always turn off the power, unplug the machine and then make sure that the machine does not run by pressing the pedal before performing any maintenance, such as checking, repairing, cleaning, etc.

**注意**  
使用离合式马达的情况下,在关掉电源①后惯性作用会继续旋转。这时如不注意踩动缝制机踏板②时,缝制机会突然动作,这是很危险的。请在关掉电源后,仍继续踩动踏板②,直至缝制机完全停下来为止。

**Caution**  
A clutch motor keeps on running for a while by inertia after turning off the power① suddenly .If the machine pedal② is stepped on inadvertently , it is dangerous as the machine will start running unexpectedly .Keeping on stepping on the pedal② until the machine comes to a stop after turning off power suddenly.



- 在离开缝制机台时,务必关掉电源。
- 停电时也请务必关掉电源。
- 为了总是安全地,运转良好的使用缝制机,日常的点检是不可缺少的,请予以注意。
- Turn off the power before leaving the machine table.
- In the event of a power failure, be sure to turn off the power.
- Check that the machine is securely grounded.

**供油**  
加油量是使油面处于H线及L线之间为好。当油面低于L线时,就要及时补充机油。机油请使用杰克公司指定的[HIGH SPEED SEWING MACHINE OIL] (ISO粘度与VG22相同)。  
**Lubrication**  
After filling the oil pan, the oil level should lie between (H) and (L) lines.  
Add oil when the oil level reaches or goes below (L) line.  
Note: Use Jack designated oil [HIGH SPEED SEWING MACHINE OIL] (ISO VG22)

**给HR装置供油**  
为了防止布纤维或线被切断,请尽早给HR装置供油。  
注:硅油请使用本公司指定的冷却油。[请使用日本UNION CARBIDE(株)的UCCL-45(10)]  
**Filling the HR device with silicon oil**  
Fill the device with oil before it is too low in order to prevent needle thread breakage and fabric damage.  
Note: Use recommended silicon oil [UNION CARBIDE CORPORATION] UCCL-45(10)

**穿线的方法**  
(1)请掀起护眼板,打开机盖(3处)。  
(2)抬起弯针挑线架。  
(3)把机上原有的线及缝制线线绑在一起。  
(4)按下弯针挑线架,弯针挑线架回到原位。  
(5)针线 将针线拉到针眼前,剪掉线头再次穿好针线。  
(6)弯针线,上装饰线直到拉出接头后来后,用剪刀剪齐接头,整齐。  
**Threading**  
(1)Open the eye guard and three covers.  
(2)Take up the bracket.

**压脚压力调节**  
压脚压力的调节是松开螺帽①和旋转螺丝②来进行的。在能取得平稳针脚的范围内,尽量调得松一些为好。  
**Adjusting the presser foot pressure**  
Loosen adjusting (1) nut and turn adjusting screw(2) to adjust the presser foot pressure. It should be as light as possible ,yet be sufficient to obtain the proper stitch formation.

**线状态的调节**  
线状态的调节是用针线状态螺帽①,上装饰线状态螺帽②,下针状螺帽③来进行调节。  
**Thread tension**  
Mask tension adjustments with the needle thread knob (1),top cover thread knob(2),and looper thread knob(3).

**差动比的调节**  
差动比是通过松开螺帽①后,把调节杆②上下移动来进行调节的。  
**Adjusting the diff feed ratio**  
Loosen nut(1) and move the lever up(2) and down to obtain the correct differential feed ratio then tighten nut (1).

**缝制机的清扫**  
缝制机的清扫,以针板槽及送布牙周围为主。  
**Cleaning the machine**  
Mainly the slots of the needle plate and the feed rows should be cleaned.

**针脚长度的调节**  
握住针距调节按钮,旋转手轮,针距调节按钮会陷入更深之处。这时边握住针距调节按钮,边转动手轮,使校准标记对准所希望的数值。针脚长度调节。注:针脚长度的调节务必请在调节差动比之后进行。  
**Adjusting the stitch length**  
While pressing the push button,turn the handwheel to seek the position at which the push button goes further into the depth.Then keeping the button pressed,turn the handwheel and set the desired scale to the aligning mark. Note:Stitch length adjustment must only be made after the differential feed ratio has been changed.

**换针**  
1.准确辨认针的前后,请将针凹向后方,即背向操作者进行安装。  
2.针要牢固的插到孔的最深处。  
**Replacing the needle**  
1.Check the needle carefully to see that the scarf is turned to the rear of the machine.  
2.Insert the needle to the proper depth, and fasten securely.

**检查机油的循环**  
**Cleaning the oil circulation**

**换机油**  
机油的更换,请在使用开始一个月后更换一次。然后,每6个月更换一次。  
**Replacing the oil**  
Replace the oil one month after the frist use and every six months thereafter.

**附表: W4-D-05步进电机控制器说明书**  
1. 显示及操作界面及控制器结构及接口

名称	图标	具体说明
参数键		参数值加
参数键		参数值减

**2. 操作参数说明表**

序号	功能参数	范围	默认值	参数说明
1	转速	0.5-6.0	1.0	1、根据不同主轴转速调整步进电机转速,单次调节 0.1 2、长按 P 或 S 键, 先调入当前数值, 再次按 P 或 S 键进行参数值调节

**3. 错误代码说明表**

序号	内容	对策
E0	主轴电机控制器与步进电机控制器通信异常	请检查通信连接线是否松动或脱落, 请尝试将电源重启; 上述如仍无法解决请联系当地服务商或拨打 4008876858.
E1	步进电机控制器过流	请尝试将电源重启; 上述如仍无法解决请联系当地服务商或拨打 4008876858.
E2	步进电机控制器驱动电压过高	请尝试将电源重启; 上述如仍无法解决请联系当地服务商或拨打 4008876858.

**Instructions of W4-D Interlock sewing machine panel operation**

本控制器使用双位数码管显示实现参数调整。在 P 主界面,第一个数码管显示“P”,第二个数码管显示当前设定的停针位置,上、下停针如图所示(图1)。  
In P interface, the first tube display “P”, the second tube display shows the current needle position, picture 1 shows the upper and lower needle position.

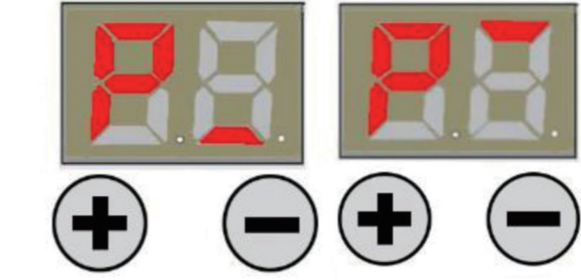


图1 上、下停针显示界面

**1.转速的修改 Modify speed**  
在待机 P 界面按+键或者-键,显示当前转速,按+键速度递增 100RPM (数值递增 1),按-键速度递减 100RPM (数值递减 1),长按+键(-键)可实现快速递增(递减),停止按+键或者-键后约 3 秒,自动保存设定的速度参数,并回退到 P 界面。  
The panel shows “P”. Then press + or - to adjust speed up and down, short-press + or - to adjust speed up 100RPM and down 100RPM, long-press + (-) speed rapidly up (down). After 3 seconds, the parameter saved and the panel back to the “P”.

**2.停针位修改 Needle Position Adjust**  
在 P 界面下,长按+键约 3 秒不松开,可以调节上下停针位。  
The panel shows “P”, press +for 3 seconds, then set the position up or down.

序号 NO.	参数定义 parameter	范围 range	默认值 Default	参数说明 Description
K	机头灯亮度调节 LED light adjustment	0-3	2	0: 灭 off 1~3: 亮度 1~3 level 1~3
L	缝制限制速 Limited sewing speed	05- 55	50	以 500rpm 为单位递减 Decline by 500rpm every time
M	停针位开关 Switch of needle position	0-1	1	0: 关闭 off 1: 开启 on
H	休眠时间 Dormancy time	0-6	3	0: 关闭 off unit: 10min
V	速度显示使能 Speed display	0-1	0	0: 关闭 off 1: 开启 on

在 P 界面,长按+和-一组合键 3s,可进入技术员界面,并显示 F  
The panel shows “P”, press +and - for 3 seconds, inter engineers interface, and it shows “F”

在 F 界面,长按-键 3s,进入监控参数,并显示 J  
The panel shows “P”, press — for 3 seconds, inter monitoring parameter, and it shows “J”

J1	实时速度 Real-time Speed	显示的数×100=实际速度 the showing number multiples by 100 equal to the real speed.
J2	实时功率 Real-time Power	显示的数×10=实际功率 the showing number multiples by 10 equal to the real power.
J3	输入电压 Input Voltage	显示的数×10=实际电压 the showing number multiples by 10 equal to the real voltage.
J4	历史电压 Historical Voltage	显示历史输入最低电压和最高电压 Display the historical lowest input voltage and highest input voltage.
J5	历史错误代码 Historical Error	显示最新的 5 个错误代码 Display historical error code(only show the latest 5 ).
J6	累计运行时间 Cumulative Running Time	显示的数×100=实际时间 (Hour) the showing number multiples by 10 equal to the real time(hour).

**3.恢复出厂设置 Factory reset**  
在 P 界面,长按-键 3 秒,参数将恢复出厂设置。(J4、J5、J6 的监控数据除外)  
**4.操作参数说明表 Parameter description**  
The panel shows “P”, press — for 3 seconds, the parameter will back to factory setting.  
**5.错误码说明表 Error code description**

错误 Error code	内容 Reasons	对策 Solutions
E1	电机堵转 Motor stuck	请转动手轮检查机头是否卡住或者干涩转动困难;请检查电机插件是否松动或者脱落;请检查加工物料是否过厚,电机因扭力不足而无法贯穿;请检查机器是否缺少润滑油。 The motor run out of load capacity, please reduce the load capacity for the motor and then restart the motor; Please check if the plug of motor loose or drop; Please check if the sewing material is too heavy; Please check if the machine needs lubrication.
E2	软件过流 software over-current	请关机后重新上电,如果不能消除报警,请检查:电机负荷过大,请减轻负荷后重启电机; Motor used too much, Restart machine after several minutes, then please check if the fabric much too heavy.
E3	参数保存异常 Parameter save abnormal	出现此种状况,需要关闭电源,稍后再打开电源开关即可; 恢复出厂设置(长按-键约 3s 不松开);若重启或者恢复出厂设置后也不能解决,建议联系经销商解决。Restart machine after several minutes or reset machine(press -3s ); If the problem unsolved, please contact dealers.
E4	电机霍尔信号异常 Hall of the motor with problem	请检查电机编码器插头连接是否可靠,编码器信号线是否有断线,插针是否退出或者变形。Please check if the 10Core line connect well or not, please check if the connect line of hall is well or not.
E5	定位器信号异常 The synchronizer signal	请检查定位器是否连接电控;请检查上下定位信号是否正常。 Forget to insert the synchronizer cable before turn on the machine To check the both up needle position signal and the down needle position signal is working.
E6	调速器异常 Speed governor abnormal	请检查压脚机构是否回到正确位置,压脚安全开关是否损坏,插座是否正常。To check if the presser foot back to the correct position or not , to check if the safety switch button is damaged or not, the outlet is abnormal or not.
E7	电流检测电路故障 Current detection and circuit fault	请检查电路板是否干净清洁;请检测电源电压是否正常;请等待电源重新开启/复位(请仔细检查电路板各项机能)。Please check whether the circuit board is clean; Please check whether the power voltage is normal; Please wait after restarting the power or reset(please carefully check each function of the power board).
EA	硬件过流 Hardware over-current	请关机后重新上电;请检查供电电压是否正常;请尝试恢复出厂设置。Please cut off the power and restart;Please check whether the supply voltage is normal;Please try to restore factory defaults.
Eb	系统过电压 System over-voltage	立即切断电源,并检查供电电压是否过高,如果是,请调整供电电压到额定电压后再开机工作(额定电压:220V)。Immediately cut off the power, and check whether the supply voltage is too high, if yes, please adjust the rated voltage, then start to work(rated voltage:220v).
EC	系统欠电压 System under-voltage	请检查供电电压是否正常;请等待电源重新开启/复位(请仔细检查电路板各项机能)。Mean the voltage abnormal, please check if the voltage is normal or not; Means waiting for the power, and need to restart again or recover to the factory reset.

JACK高速绷缝机相关技术参数

高行程数据									
机型	×□□□								针杆行程
W4-01GB/02BB/06CB	356	9.7	3~3.2	9.8	5~5.3	17	6.2	0.8~1.2	33.4
	364	9.3	2.8~2.8	9.4	5~5.3	17	6.2	0.8~1.2	33.4
	356	9.7	3~3.2	9.8	5~5.3	17	6.2	0.8~1.2	33.4
W4-23DB	356	9.7	3~3.2	9.8	5~5.3	17	6.2	0.8~1.2	33.4

标准行程数据									
机型	×□□□								针杆行程
W4-01GB/02BB/06CB	356	8.5	3.2~3.5	8.5	5~5.3	17	6.2	0.8~1.0	30.8
	364	8.1	2.8~3.1	8.5	5~5.3	17	6.2	0.8~1.2	30.8
	W4-23DB	356	8.1	2.8~3.1	8.5	5~5.3	17	6.2	0.8~1.0
W4-23DB	356	8.1	2.8~3.1	8.5	5~5.3	17	6.2	0.8~1.2	30.8